

the **ts** collection



VERSATILE, SECURE, VIRTUALLY MAINTENANCE FREE, ALUMINIUM



Let our Folding/Sliding doors transform the way you live your life. Whether you choose to relax in a stylish open plan living area or you want to create beautiful panoramic views from any room, Folding/Sliding doors from the ts collection create a wonderful living environment.

DESIGN FEATURES

- Internally beaded with a softline detail to all external doors and panels
- Chamfered and square bead options
- 4 stainless steel wheels ensures smooth and consistent operation
- Unique, flush line pop-out handle that allows maximum door opening
- Low threshold option with a 15mm step height (Part M – Building Regulation)

OPTIONS

- Doors and panels can be used in any configuration, style and design
- All configurations are available in both open-in and open-out options
- Full range of suited hardware available
- Glazing sizing range of 24mm – 36mm
- Available in any single RAL colour or dual colour option

CONFIGURATIONS

Available in a range of styles and designs, panels can be stacked inside or outside of the room, to the left, right or split to stack on both sides.



You have a choice of over 100 RAL colours.

Wood effect finish available.



Note: Colours shown are representative only.

PERFORMANCE

- High security hinges and locking mechanisms as standard
- Shootbolts top and bottom of the interlocks for enhanced security
- Unique high strength roller design for increased weight capacity
- Dedicated Bottom bogey guide for consistent operation and increased security
- Double Track threshold allowing greater stability
- Door U Value 1.7 w/m² K
- Severe weather rated BS6375-1:2009

Water: 600 Pa

Air: 600 Pa

Wind Pressure: 1800 Pa

SIZE RESTRICTIONS

Minimum Width: 1600

Maximum Width: 6500**

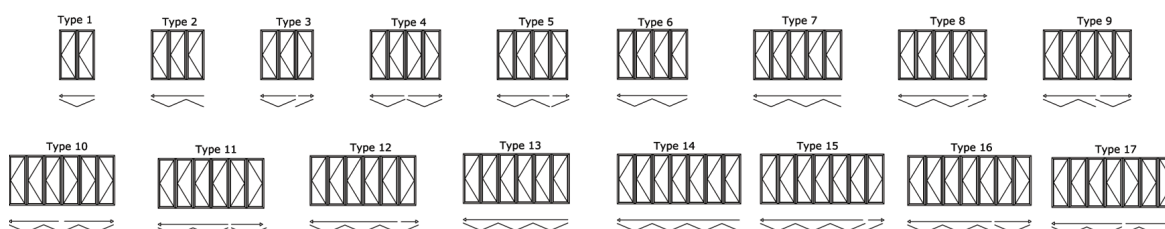
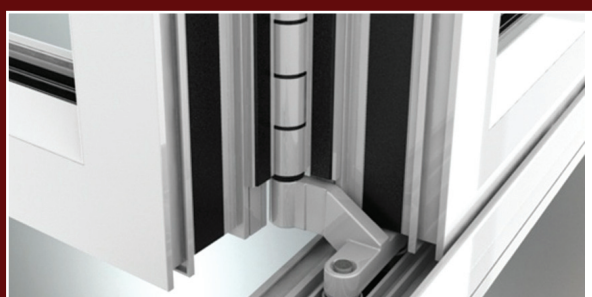
Minimum Height: 1600

Maximum Height: 3000**

Maximum Sash Weight: 100Kgs**

Variations: Individual panel width not to exceed 1000mm.
Panels heights, widths and weights are dependant on style and design.

** The sizes detailed above are for guidance only. Please contact the technical office for further details.



Survey, installation and maintenance.

HOW TO SURVEY FOR YOUR BIFOLDING DOOR

MEASURE THE APERTURE

Width: Measure at 3 different levels. The smallest width must be used for your order.

Height: Measure at 3 different levels. The smallest height must be used for your order.

Diagonal Measure: Squareness of your aperture is checked by measuring corner to corner.

You need to order your door (overall height and width) 10mm shorter and 10mm narrower than the opening you plan to install it into. This gives you tolerance (space) to pack out the frame of the door using plastic or timber packers (wedges) when installing, to get it square and plumb. If the frame is ordered the same size as the opening you will have difficulty getting the door in position and you will not be able to adjust the level of the frame. Remember your opening will not be perfectly square. Think about your floor level. Have you allowed for carpet, tiles, wooden floors or patio slabs? Ensure that the door will open over your floor or patio! Our outer frame includes the bottom track. You may wish to minimise the base threshold height of your doors to reduce the step-over, by recessing the outer frame into a floor channel. The base threshold is designed to be high enough to repel water and wind. Performance may be compromised by recessing the frame into the floor.

CONSIDERATIONS BEFORE ORDERING.

- Doors must be viewed from the outside when ordering
- Which way do you want your door to fold? Into or outside the property?
- Which way should doors travel when opening; right, left or out from the middle?
- Do you want a traffic door as a main opener for daily use?
- Do you need fixed top lights if the door is over the recommended height?
- How many panels do you need? Check our online order form at for minimum and maximum sizes and door configurations.

INSTALLING YOUR BIFOLDING DOOR

Before you do anything, if there is already a window or door fitted in the opening, BEFORE REMOVING IT, measure the opening and check measure your new bifold door. There is no point removing the old door if your new one does not fit for whatever reason!

STEP 1. (Outer frame only - the doors should be placed to one side) The most critical thing on whole installation is to make sure the base of the frame with track and subcill are absolutely level. Frame base must be mechanically fixed using bolts or suitable screw fixings 150mm in from the corners and at 600mm centres. Packing required at fixing positions to prevent distortion of frame. Fixings should be sealed to prevent moisture penetration. Orientate outer frame for correct operation of the panels, fold in or fold out. Drainage slots must be on outside of property.

STEP 2. First jamb or side frame to fix, is one against which sliding doors will stack. Before fixing, check squareness of side frame, relative to bottom track and side wall. This jamb will bear significant weight when the doors are stacked open, so all fixings and wall substance must be excellent. First fixings should be 150mm in from corners and at 600mm centres along vertical height of the frame. Packing required at fixing positions to prevent distortion of the frame. Fixings should be sealed to prevent moisture penetration.

STEP 3. Fix second jamb observing the same rules as Step 2.

STEP 4. Once you have checked frame is plumb/square, fix head frame. First fixing should be 150mm in from each corner and at 600mm centres. Packing required at fixing positions to prevent distortion of the frame. Fixings should be sealed to prevent moisture penetration.

If you have installed the Bifold Door complete with panels move to Glazing.

STEP 5. Offer first door panel to outer frame starting at hinge side and fix with hinge pins and screws provided. Continue to attach each panel in sequence; it is easier to locate the next panel when the other door panels are in the open position.

GLAZING YOUR BIFOLDING DOOR

STEP 1. Remove all glazing beads noting their position for relocating later.

STEP 2. Apply bridging packers supplied into the corners of panels and place normal glass packer on top as required.

STEP 3. For doors to operate smoothly you must toe and heel each glass unit. Always start from bottom hinge position.

STEP 4. Insert all glazing beads in same order as they were removed, width beads first.
Now insert wedge gasket between glass unit and bead.

FINISHING

A low modulus neutral cure perimeter sealant should be used for perimeter sealing.

Make sure slotted drainage channels at the base of the door are free of debris.

Check operation of master door.

Check operation of all sliding doors.

MAINTENANCE

TS Bifolding Doors are designed for minimum maintenance. Keep doors clean and periodically clear debris out of the stainless steel track & channel area to ensure smooth operation.

Wipe or wash doors using a sponge and warm soapy water. Do not use chemical cleaners.

Caustic material such as plaster dust can be extremely corrosive.

Keep off doors and hardware at all times.

Failure to follow these guidelines may affect your warranty.